



Apartment 18, 11, Huntington House Palmer Road, London, SW11 4EJ
£1,150,000



Apartment 18, 11, Huntington House Palmer Road, London, SW11 4EJ

£1,150,000

Lessel residential Sales are delighted to present a luxury two bedroom apartment, located in the Prince of Wales Drive development in Battersea, SW11

A two bedroom, two bathroom, fully furnished apartment located in a vibrant and highly desirable location. The apartment is located on the second floor

This sophisticated and spacious apartment comprises of an open plan kitchen/ lounge leading to a private balcony. The master bedroom features a stylish ensuite shower room. The apartment also displays a spacious second double bedroom, a family bathroom and further benefits from a compact cloak room.

Residents within the development benefit from a 24-hour concierge, residents roof terrace and facilities include Pool, Sauna and steam room.

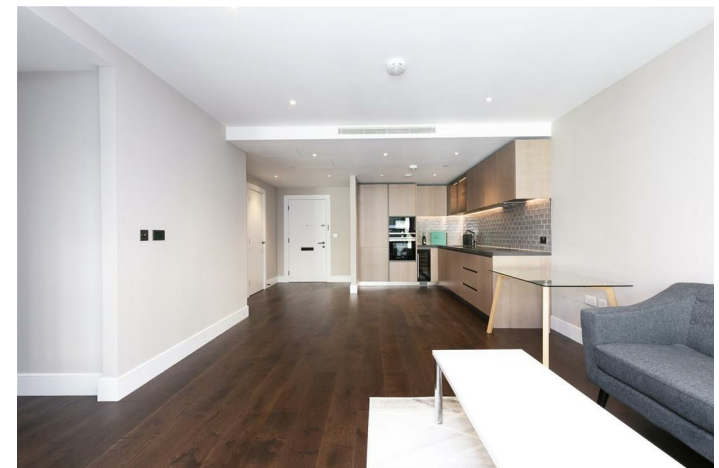
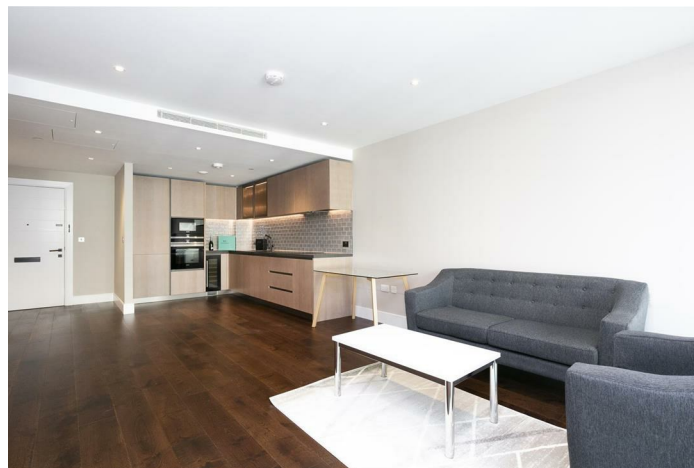
Location information

Conveniently located moments from Battersea Park, a short stroll over the Thames to Chelsea, adjacent to the iconic Battersea Power Station. Prince of Wales Drive benefits from the heritage of the old and the delights of the new. Conveniently located for both Queenstown Road and Battersea Park Overground Stations, offering direct connections to Waterloo and Victoria.

Description



Situation

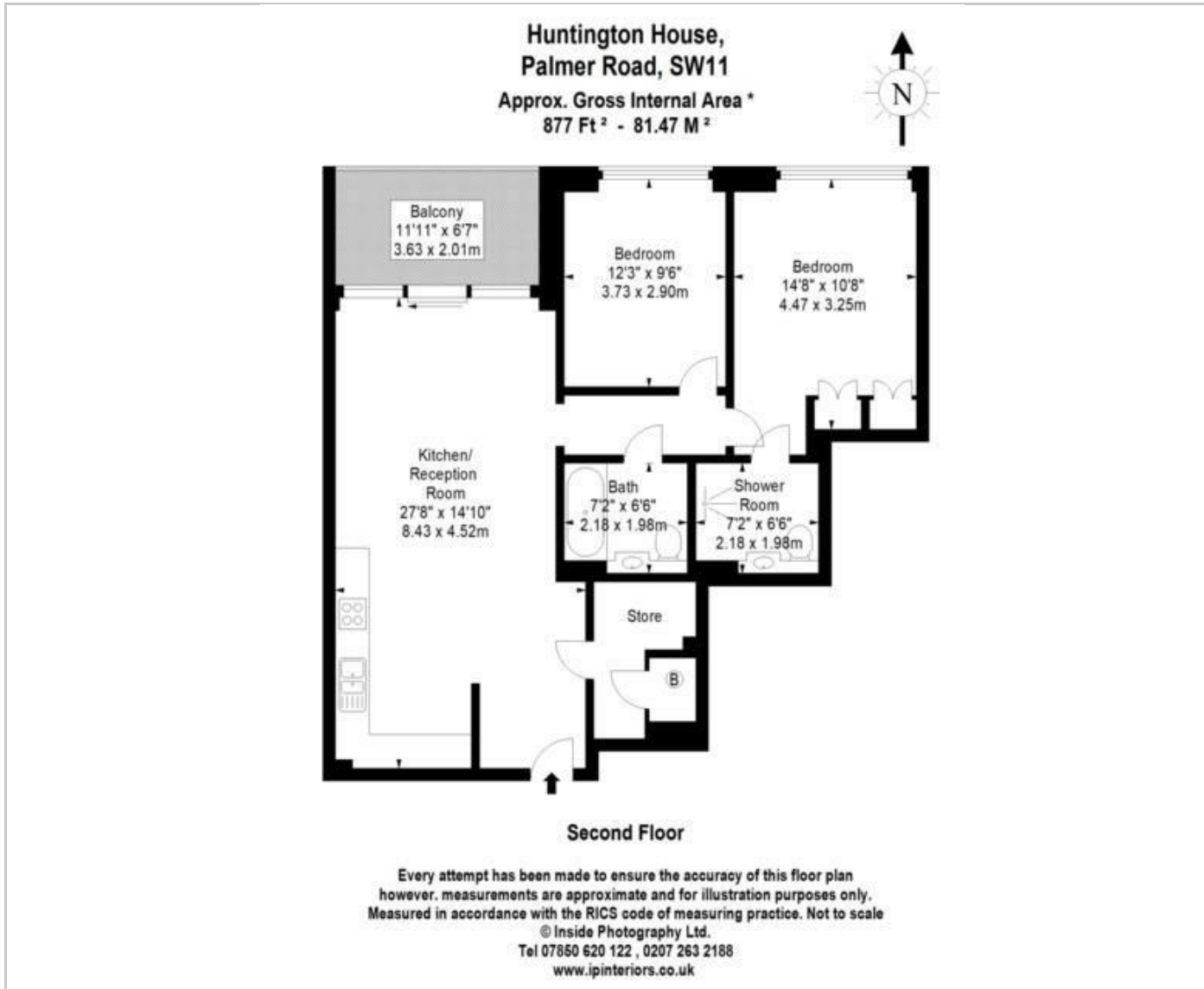


null

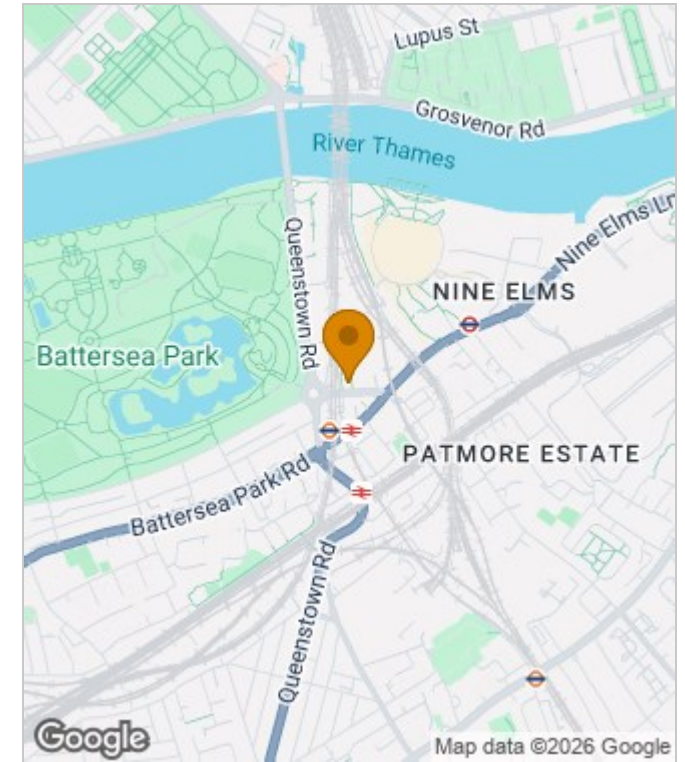
Council Tax Band: F

Available:

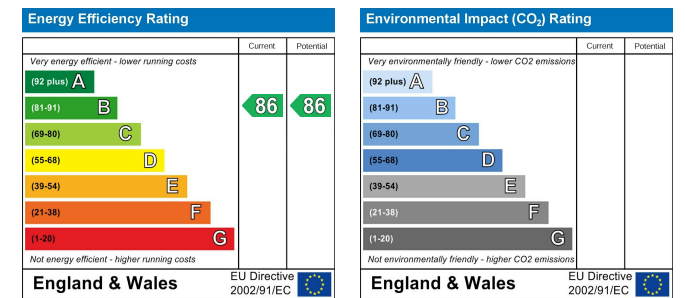
Floor Plans



Area Map



Energy Performance Graph



These particulars, whilst believed to be accurate are set out as a general outline only for guidance and do not constitute any part of an offer or contract. Intending purchasers should not rely on them as statements of representation of fact, but must satisfy themselves by inspection or otherwise as to their accuracy. No person in this firm's employment has the authority to make or give any representation or warranty in respect of the property.